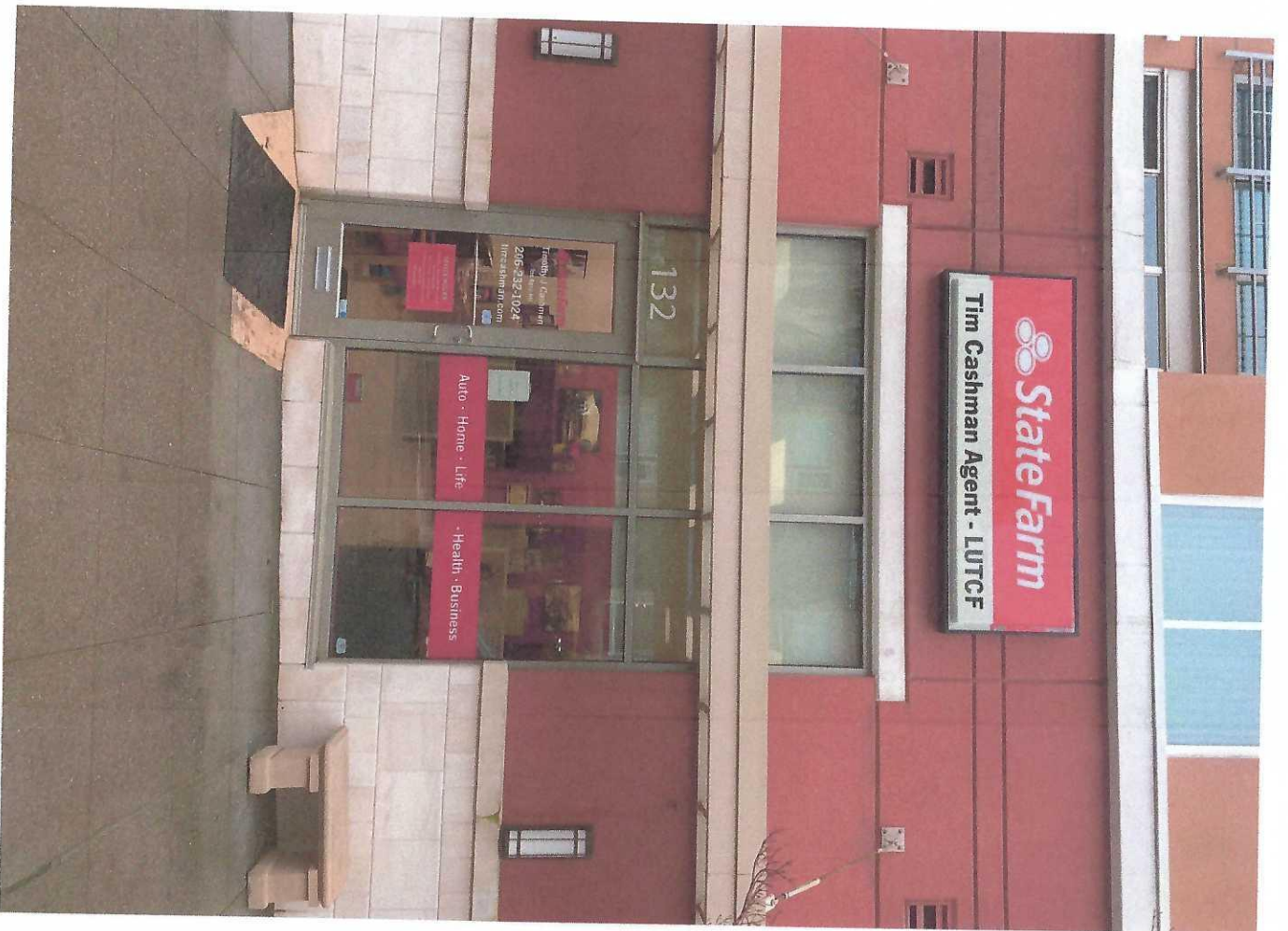


Updated 1/23/24



Sign —

3' x 8' (24.59 feet) 24.92 sq feet.
Enclosed in metal frame

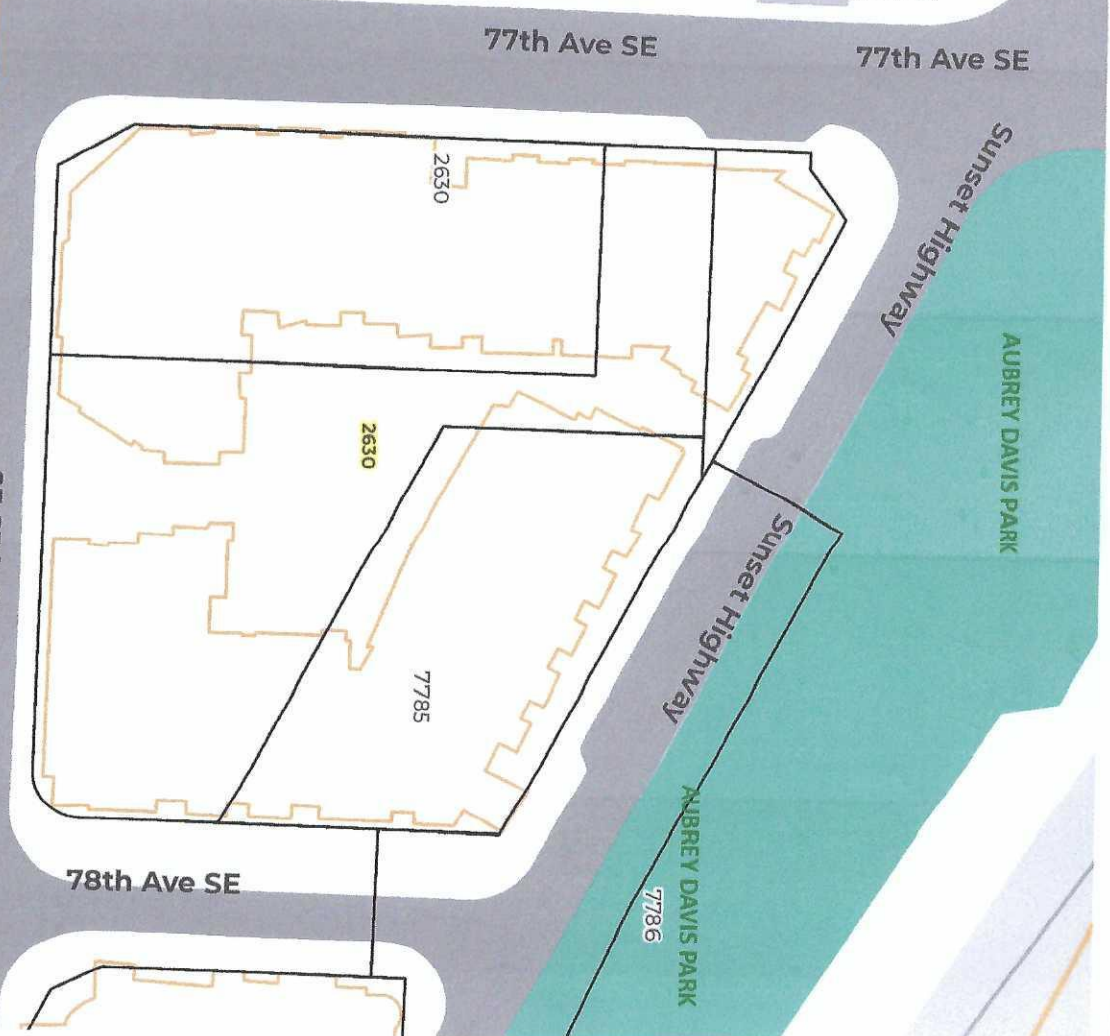
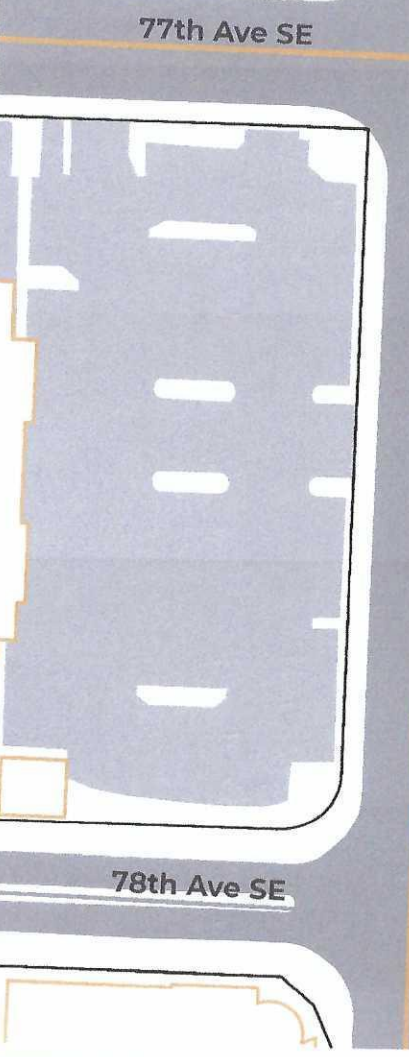
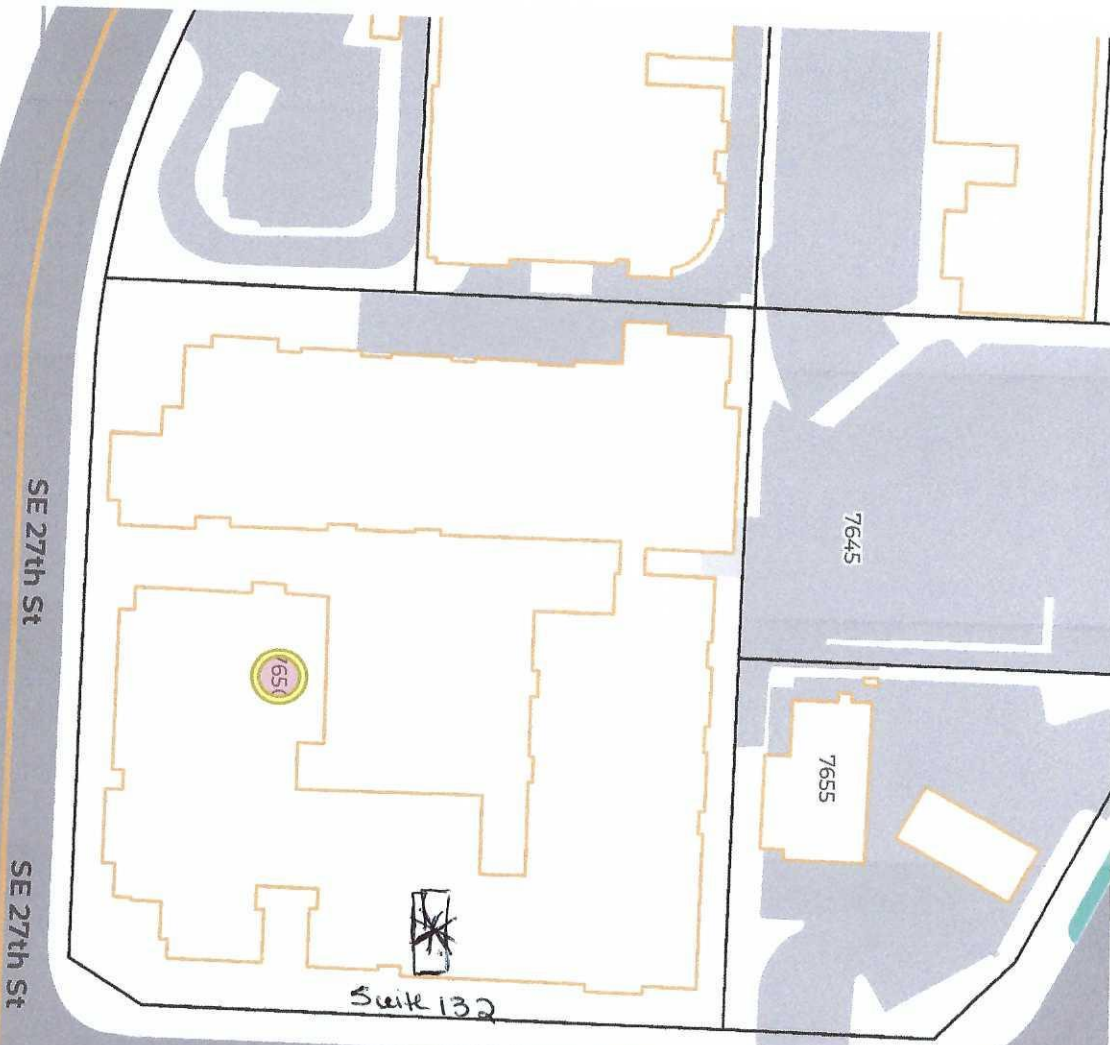
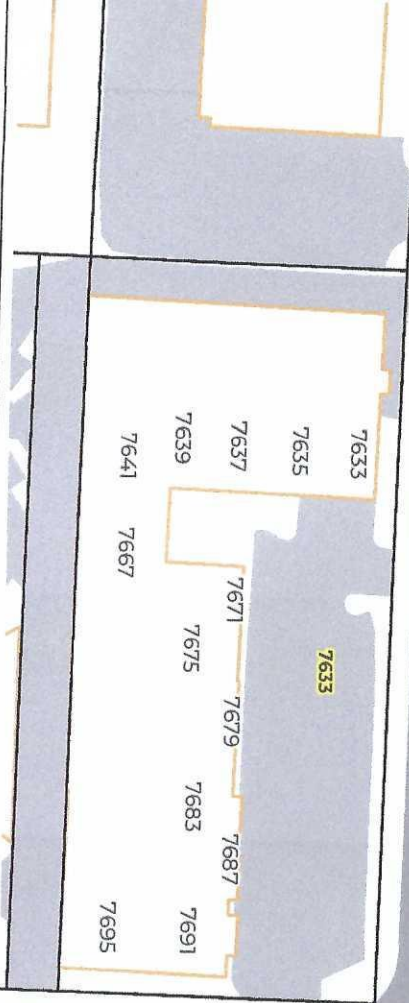
Sign mounted to wall of Bldg
with 3/8 x 3 1/2 in expansion
anchors.

There are 4 expansion anchors,
1 in each corner.

Sign 3' x 8'
Height of sign 3'1"

Address 7650 SE 27th St
Suite 132
Mercer Island, WA
98040

Window 11'4" x 10' 114 sq feet
Window Details 10.57 = 10%



132

State Farm
Timothy J. Cashman
Ins. Agency, Inc.
206-232-1024
timcashman.com

OFFICE HOURS
Monday - Friday
9:00am - 5:00pm
Saturday
9:00am - 12:00pm
Sunday
Closed

Auto • Home • Life
Health • Business

State Farm
Tim Cashman Agent - LUTCF